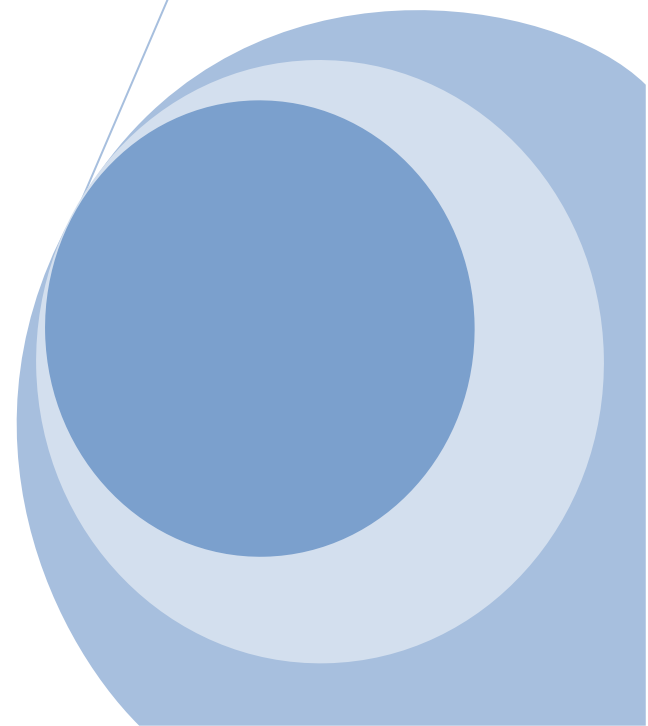




Technical Requirements and Computer Setup

This document reviews hardware and software requirements and any configuration necessary on a SlideManager user's computer.

Media Marketing, Inc





Computer Setup

Hardware

Hardware capable of running a supported browser

1024x768 or larger display

Internet/Intranet connection

Software

Internet Browser / Operating System

Any browser or operating system supported by Silverlight can be used. Choose *System Requirements* from <http://www.microsoft.com/silverlight/downloads.aspx> for a list of supported software.

Silverlight Installation

If you browse to the application and see the login page the Silverlight control is installed successfully.

If Silverlight is not installed prior to visiting the SlideManager application the user will receive a notification prompting them to install the control. The Silverlight control acts as a program, so permissions need to be allowed accordingly to install it. The security on their computer may prevent the users from installing Silverlight.

Silverlight can be installed by:

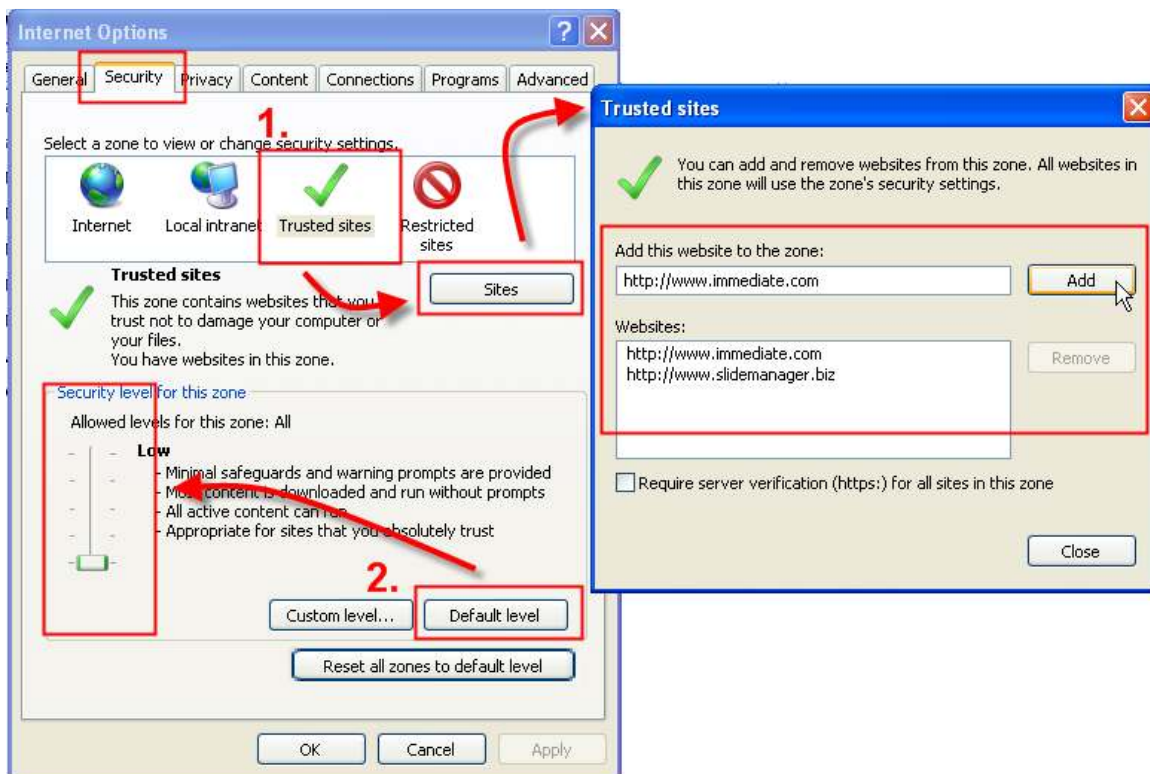
1. Choosing the prompt from the application
2. Manually going to Microsoft's site (<http://www.microsoft.com/silverlight/downloads.aspx>)
3. Deploying the control (<http://silverlight.net/learn/whitepapers>)

Recommended Browser Settings

Trusted Sites / Pop up Blocker Exception

To avoid potential issues, enter the website address into the Trusted Sites list in Internet Explorer. If not using Internet Explorer configure the browser to allow pop-ups for the application's URL.

1. Tools → Internet Options → Security → Trusted Sites → Sites → enter the web site and choose 'Add'. (You may need to uncheck 'Require server verification. . .')
2. On the Security Tab choose Default Level, and then slide the bar to the left to Low.



Temporary Internet Files Setting

To avoid possible refresh issues, have IE check for newer versions of stored pages on every visit:

Tools → Internet Options → General → Temporary Internet Files or Browsing history → Settings → Check for newer versions of stored pages → select **Every time I visit the webpage**

